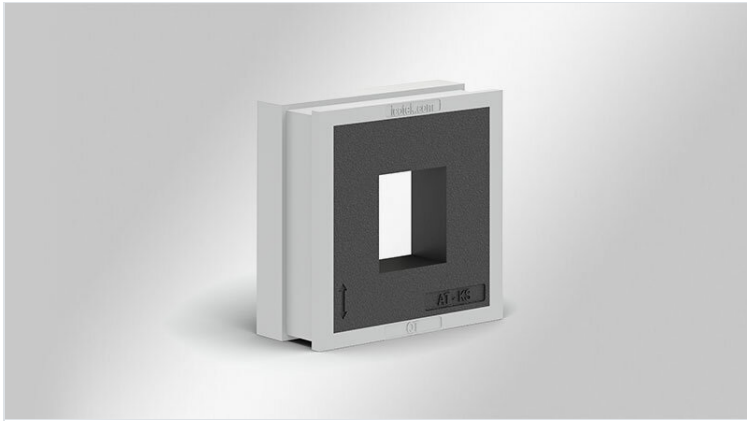


QT-AT-KS adapter grommets

based on QT large, for Keystone couplers



IP54

HL3
EN 45545-2

ECOLAB
certified

UV
ISO 4892-2A

RoHS
compliant

REACH
COMPLIANCE

Made in
Germany

The grommet QT-AT-KS is constructed on the basis of a large QT cable grommet. The polyamide body is moulded with elastomer.

The cut-out enables a snap-in assembly of all couplers based on the Keystone system. If required the keystone couplers can be disassembled with a screwdriver.

The insertion of QT-AT-KS into an icotek cable entry frame enables the routing of cables with and without connectors in combination with the creation of interfaces for Keystone couplers within one cable entry system. Separate cut-outs for connectors are no longer necessary.

QT-AT-KS provides ingress protection of up to IP54 (depending on the Keystone coupler type and manufacturer).

Specifications

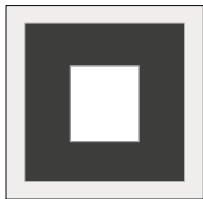
IP rating (EN 60529)	IP54
Material	Elastomer Body: Polyamide
Flame class	UL94-V0, self-extinguishing
Operating temperature	-40 C° to 100 C°
Properties	silicone free, halogen free

Advantages & benefits

- Connectors can be integrated directly into the cable entry frame
- Separate cut-outs for connectors are no longer necessary
- Space-saving solution
- Grommet is suitable for all Keystone couplers
- Snap-in assembly

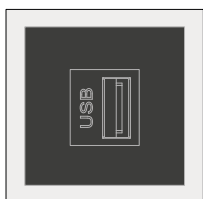
Product types & sizes

QT-AT-KS

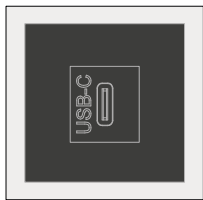


Part No.	42601
EAN	4251269323003
Package quantity	10
Length	40 mm
Width	39 mm
Height	17 mm
Mounting height	2 mm

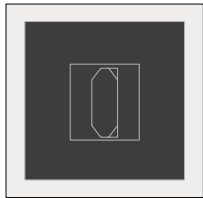
QT-AT-KS-USB 3.0



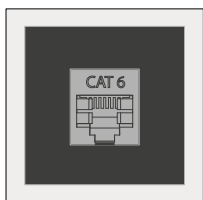
Part No.	42644
EAN	4251269325199
Package quantity	1
Length	40 mm
Width	39 mm
Height	17 mm
Mounting height	2 mm

QT-AT-KS-USB-C

Part No.	42647
EAN	4251269335266
Package quantity	1
Length	40 mm
Width	39 mm
Height	17 mm
Mounting height	2 mm

QT-AT-KS-HDMI

Part No.	42645
EAN	4251269325205
Package quantity	1
Length	40 mm
Width	39 mm
Height	17 mm
Mounting height	2 mm

QT-AT-KS-CAT6

Part No.	42646
EAN	4251269325212
Package quantity	1
Length	40 mm
Width	39 mm
Height	17 mm
Mounting height	2 mm